

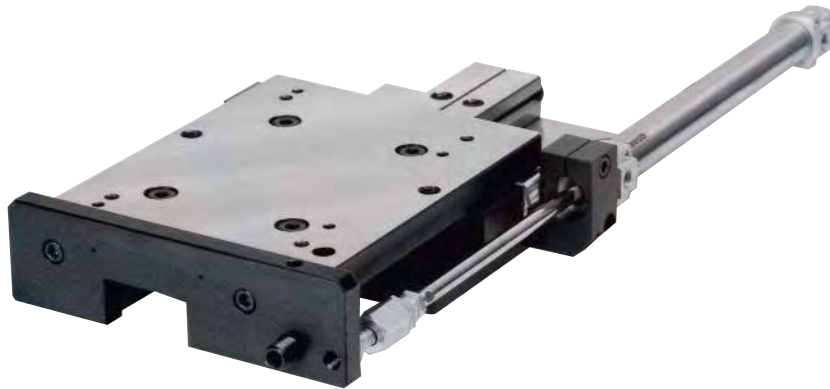
# SCHMIDT® Slide tables

## For efficient production

**SCHMIDT® Slide tables** are specially designed for the high forces of press systems and where a position requires high precision against an adjustable stop. It is an economic solution for tall parts and for placement of parts outside of the danger area. They can be mounted, depending on the type, both in longitudinal and lateral positions, and can be adapted for automated processes.

### Features:

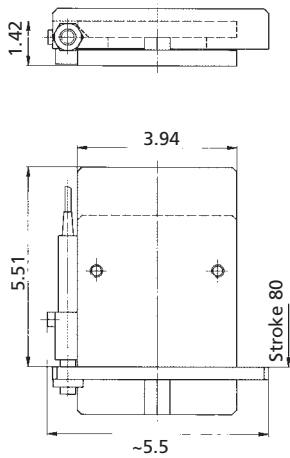
- Cross roller bearings for high-precision guidance
- Play-free adjustment of the table guidance is possible
- Maintains its working position via pneumatic cylinders
- Position detection of the slide table via integrated sensors
- Integrated shock absorbers cushion impact at end positions
- Positioning via pneumatic cylinders in automatic mode
- The press stroke is activated only when the slide is in its proper position.



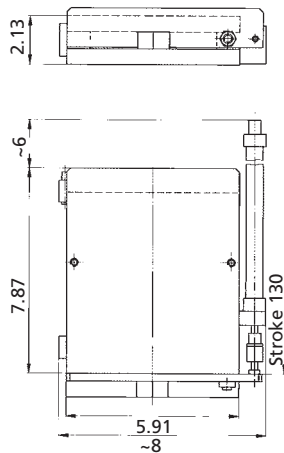
**SCHMIDT® Longitudinal slide table ST 45 P**



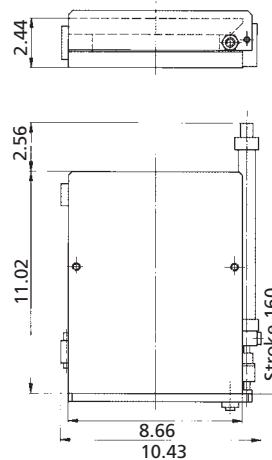
**ST 10 / ST 10 P**  
(stroke 80 mm)



**ST 45 P**  
(stroke 130 mm)



**ST 140 P**  
(stroke 160 mm)



**SCHMIDT® Lateral slide table ST 45 P**

with adapter plate for fastening on the fixture mounting platen



**SCHMIDT® Slide table ST45** with bow-type handle, manual



Type	ST 10	ST 10P	ST 45	ST 45P	ST 140P
Pressure load	lbs 2250	2250	10115	10115	31470
Stroke	mm 80, 160	80, 160	130, 200, 250	130, 200, 250	160, 200, 250, 300
	inch 3.15, 6.30	3.15, 6.30	5.12, 7.87, 9.84	5.12, 7.87, 9.84	5.12, 7.87, 9.84, 11.81
suitable for press type	20, 23	20, 23	20, 23	20, 23	29, 36, 65
	24	24	24, 25, 27	24, 25, 27	68, 74, 76
			32, 33, 34	32, 33, 34	329, 362
			61, 62, 65	61, 62, 65	365, 368
			323, 327, 361	323, 327, 361	374, 376
Manual presses	up to 2250 lbs	up to 2250 lbs	all	all	all
ServoPresses	405, 415, 416	405, 415, 416	420 max.	420 max.	all
Shock absorber		●		●	●
Bow-type handle			●		
Operating mode	manual	pneumatic	manual	pneumatic	pneumatic

Mounting holes available upon request  
● = Standard

Special designs for very long strokes on request  
manual = without cylinder, without sensors, without shock absorber

# SCHMIDT® Workstation



The **SCHMIDT® Workstation** offers a safe base for the vibration-free installation of all **SCHMIDT® Press systems**. They are suitable as seated or standing workstation according to the latest ergonomic guidelines. The **SCHMIDT® Workstation** is available in three standard sizes: PU-1, PU-2 and PU-10. Please find pictures and dimensional details below.

The basic structure is a robust welded frame. All surfaces are powder coated with standard **SCHMIDT® grey**. The telescoping, adjustable legs allow a total height adjustment of 340 mm / 13.4". The table top is made of composite or laminated wood, depending on table model.

The **SCHMIDT® Workstation** offers the following features:

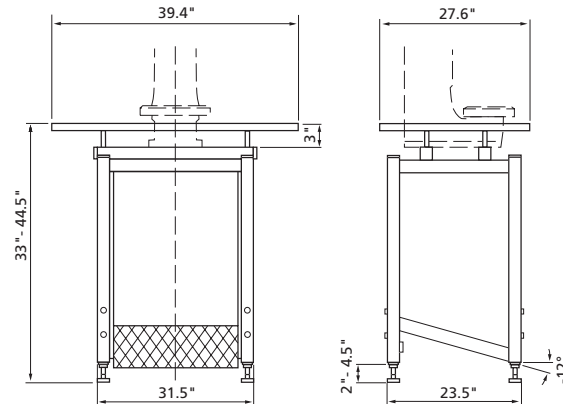
- Adjustable height (PU-10 is not adjustable, but can be ordered as sitting or standing workstation)
- Allows mounting of auxiliary components, such as part bins and staging, safety guarding, work piece clamping devices, rotary indexer, slide table, controls, etc.

Options:

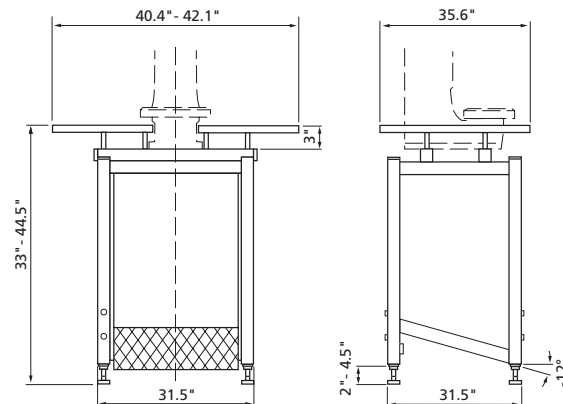
- Adjustable foot support (fixed support with PU-1 and PU-2)
- Alternate table top materials (nickel-plated steel, aluminum, stainless steel skin, composite)
- Casters, two of them swivel, two fixed (not height-adjustable)



**PU 1 Press Base**



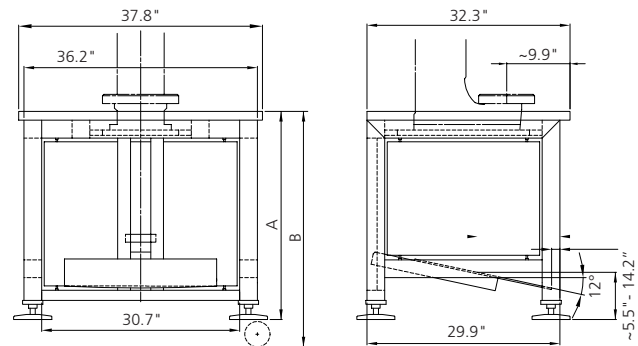
**PU 2 Press Base**



**PU 10 Press Base**



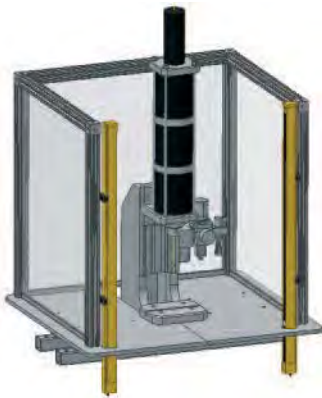
Casters for PU 10



Height as seated workstation: **A** 820 – 880 mm / 32.28 – 34.65 inches,  
**B** with casters, 920 mm / 36.22 inches  
 Height in standing position: **A** 1020 – 1070 mm / 40.16 – 42.13 inches,  
**B** with casters, 1110 mm / 43.70 inches

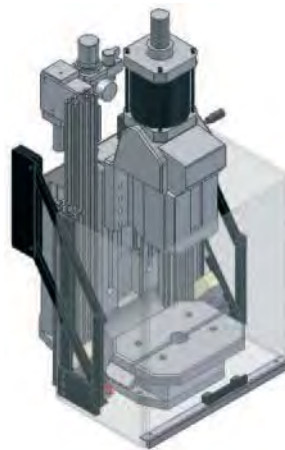
Dimensions are for reference only

# Improve Safety by using guarding



## Box Guarding with Light Curtain

Features:  
Can be used in most work cell concepts. Light Curtain typically used with Box Guarding. Protects operator from press station. It can be interlocked into control safety.



## Balanced Guard

Features:  
For single press & slide table. Full physical guarding with safety switch. Switch can be interlocked into control safety circuit which will prevent interruption of cycle by the operator. Suitable for long process time or multiple cycles



## Swing Gate

Features:  
Suitable for slide table, shuttle table & rotary index table. Allows full, physical guarding. Opening is contoured according to work piece. Switch can be interlocked into control safety circuit.



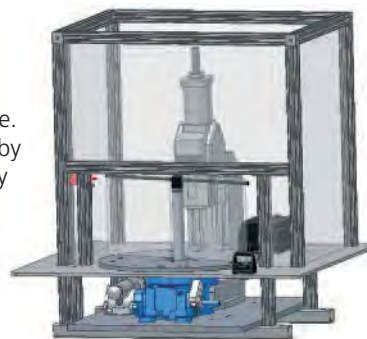
## Bay Window

Features:  
Can be used with Rotary index table. Two independent gates with interlock switch.



## Gravity Gate

Features:  
Suitable for a single press with or without a slide table. Prevents cycle interruption by the operator. Locking safety switch is included.

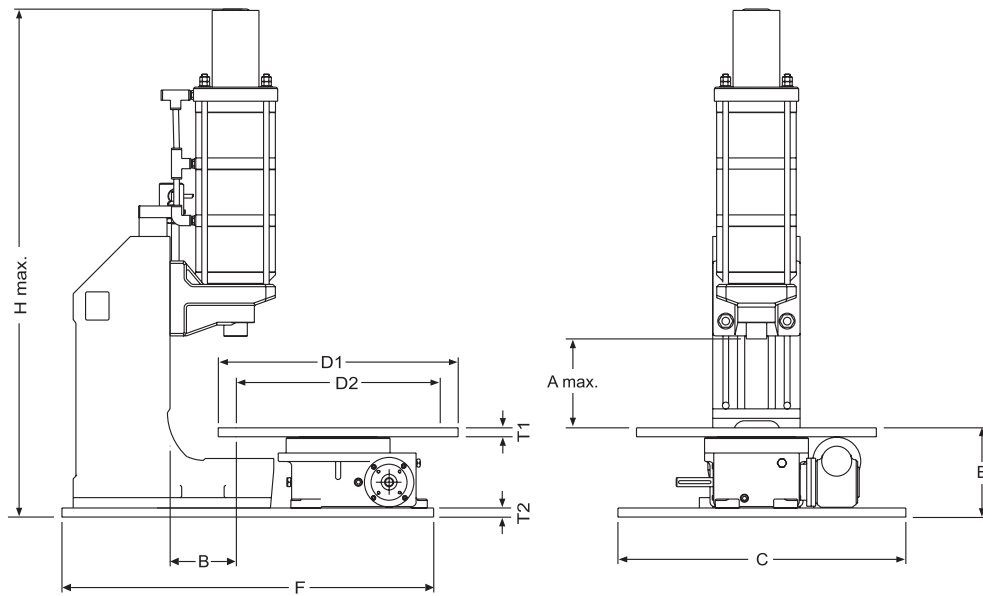


## Rotary Gate

Features:  
Rotary gate with interlock switch can be used with tall work pieces on a rotary index table. Allows full physical guarding. Switch can be interlocked into control safety circuit.

# SCHMIDT® Rotary indexing systems

For efficient production



Press	Press Force (lbs)	A max.	B	C	D1	D2	E	F	H max.	T1	T2
20	360	7.57	3.40	32	17	14.5	8.19	24	26.00	0.50	0.75
23	945	7.18	3.40	32	17	14.5	8.19	24	27.00	0.50	0.75
24	1,890	7.18	3.40	32	17	14.5	8.19	24	29.00	0.50	0.75
25	2,800	7.18	3.40	32	17	14.5	8.19	24	34.00	0.50	0.75
27	4,495	8.64	5.15	24	21	17.0	8.19	32	39.00	0.50	0.75
29	7,195	10.54	5.50	24	21	17.0	8.19	32	45.25	0.50	0.75
32	3,375	7.19	3.40	32	17	14.5	8.19	24	32.00	0.50	0.75
33	3,375	10.33	3.40	32	17	14.5	8.19	24	37.00	0.50	0.75
34	6,295	7.86	5.15	24	21	17.0	8.19	32	37.50	0.50	0.75
36	13,490	9.74	6.30	24	21	17.0	8.19	32	41.00	0.50	0.75
61	3,375	7.86	5.15	24	21	17.0	8.19	32	41.5	0.50	0.75
62	6,745	7.86	5.15	24	21	17.0	8.19	32	42.50	0.50	0.75
64	22,480	12.05	6.30	24	21	17.0	9.02	36	59.17	0.50	0.75
65	11,690	9.26	6.30	24	21	17.0	8.19	32	34.00	0.50	0.75
68	16,185	10.66	6.30	24	21	17.0	8.19	34	43.30	0.50	0.75

**SCHMIDT Technology** has developed two standard, off-the-shelf Indexing Systems. One Indexing System fits the smaller C-frame mounted Direct-Acting Pneumatic Presses No. 20 – 25 and precision Air Toggle Presses No. 32 and 33. The other Indexing System will work on all larger Direct-Acting Pneumatic, Air Toggle and Hydro-Pneumatic Presses.

Featuring a precision roller cam indexing drive chassis with variable speed control, these standard Indexing Systems are available with 4, 6, 8, 12 or 24 indexing positions. Indexing Systems are equipped with user-friendly PLC-based controls for 1 x 115 volt/60Hz operation. Custom tooling, light curtain guarding, automatic loading and unloading devices and ergonomic workstations (Model PU-1, PU-2 or PU-10) are optional.



## Force Monitoring and more throat for your larger assemblies



SQM700 Peak Load Press Force Monitor and TT44 Load Cell

### Specifications for TT44 Load Cell:

- Capacities: 1K, 2K, 5K, 10K, 15K or 22K lb.
- Output: 2 mV/V
- Non-linearity: 0.25 % full scale
- Non-repeatability: 0.01% full scale
- Deflection at maximum load: 0.001 inch
- 5 ft stainless steel metal flex hose and sensor cable

The SQM700 Peak Load Monitor can be preset to high and low limits. Peak force is captured during the press cycle, then compared to preset limits. Based on the result, a relay output is set. Fault conditions need to be reset. Beginning and end of monitoring window can be defined via force threshold, position sensor input or a combination of the two. Load cell is sold separately.

### TT44 Load Cell / Tool Holder

This load cell can easily be installed in the press ram. The load cell essentially is a 2" extension of the press ram, as there is a precision shank on the top side and a bore on the bottom side of the same diameter as the ram bore.

### Specifications for SQM700 Monitor:

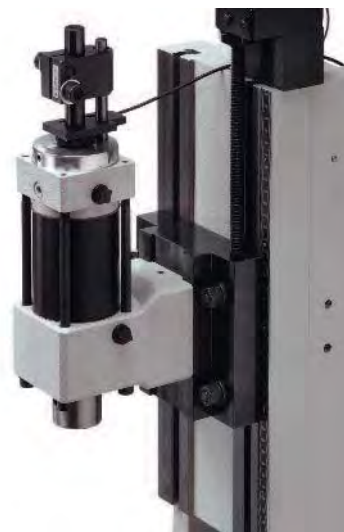
- 6 Digit Display
- Single channel operation
- Power supply: 110 / 220 V AC
- Ready for ram positioning switch interface
- NO / NC relay status output
- Peak hold
- Non-linearity: 0.02 % full scale
- Peak capture rate: 33 Hz probe trigger
- Peak capture rate: 6 Hz threshold trigger

## SCHMIDT® Spacers



### SCHMIDT® Spacers for Additional Throat Clearance

A spacer is used in case the standard throat depth is not adequate for the application. Throat depth is measured from press ram centerline to surface on which the press head gets mounted.



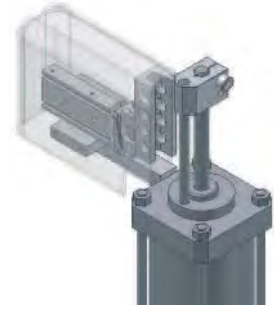
# SCHMIDT® PneumaticPress and ManualPress Accessories



**Electronic Stroke Completion Sensor**  
 Will confirm that the end of the stroke has been reached. Installed into hardened mounting block on top of fine adjustment screw on the Model No. 20-29. Triggered via the stroke limit block of the press. Automatically accepts changes in stroke adjustments.



**Intermediate Stop**  
 for two-stroke or safety stop sequential operations.



**Hydro-Pneumatic High Pressure Sensor**  
 Verifies that pressure and/or press force has been reached before press ram returns. Can be used as an interface device to commence press timer, or added operator safety when using a two hand control device.



**Speed control**  
 This accessory in conjunction with a pneumatic press can be a very cost effective solution to good ram speed control.

- A speed control on a pneumatic press provides the following benefits:
- Completely eliminate slip-stick effect
  - Better accuracy in conjunction with force or distance control
  - Improved cycle times, as it allows rapid approach, reduced speed for actual process

*Cover has been removed for illustration purposes*



**DIE PLATE MALE COUPLING 1540**



**DIE PLATE MALE COUPLING 1554**



**RAM FEMALE COUPLING 1560**

For **SCHMIDT® Presses** that are tooled with column-guided die sets, optional Modular Coupling Devices can be attached for quick, easy removal and installation of die sets.

DIE PLATE MALE Coupling	RAM FEMALE Coupling	Press Model
SN 1540-16 X 1.5	SN 1560-20	All pneumatic presses except 64 – 76
SN 1554-63	SN 1560-32	
SN 1540-16 X 1.5	SN 1560-25	64 & 74
SN 1554-63	SN 1560-25	
SN 1540-20 X 1.5	SN 1560-32	76
SN 1554-80	SN 1560-32	

More accessories available. Contact us for additional information

# SCHMIDT Technology can help – from Application Evaluation to Customer-Specific Solutions



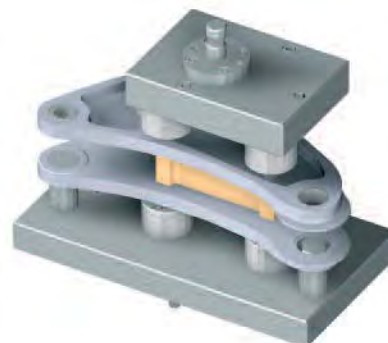
Standard 'out of the catalog' products, customized or complete turn key solutions.

**SCHMIDT Technology** is an invaluable source for your assembly needs, with the center point being a press. We welcome the opportunity to evaluate your application, perform feasibility studies, process sample parts to determine process capability from a control, as well as monitoring standpoint. We can take your applications from process development and manufacturing of prototype tooling to providing you with custom designed, turn-key solutions.

**SCHMIDT Technology** engineers and sales force has gained a wealth of experience while working on a wide array of applications. **SCHMIDT Technology** products are suitable for a broad variety of industries and can be tailored to the specific requirements and challenges that applications present, from very basic and simple pressing operations to intelligent, precise and complex processes, combined with monitoring.

The ever rising need to log and exchange process data with third party systems can easily be addressed by the various ways our control systems can be interfaced.

Your need is our challenge. We look forward to the opportunity to be of service.





## SCHMIDT Technology Corporation provides many services

A highly trained and motivated workforce ensures product quality and the success of your company. We provide application testing, calibration and training for all your press requirements.

Our training packages prepare the participants fully in theory and practice for their daily work with **SCHMIDT® Press Systems**, by offering comprehensive user training courses and seminars on complex technological products. These training courses deal with the handling of the products as well as the correct use of the control and process software.

In order to meet the high quality standards of modern production, to comply with legal requirements periodic calibrations and safety tests of the press systems according to DIN ISO 9000 (traceable calibration to meet: ISO/IEC 17025 / ANSI/NCSL Z540.1), safety measures are required.

**SCHMIDT Technology** assists you by means of a strong service package in meeting these requirements.

## SCHMIDT® Calibration

for the press systems **SCHMIDT® PressControl**  
Included in the service:

- Checking the measurement system
- Calibration
- Issue of a test certificate incl. test report
- Calibration sticker on the machine

## SCHMIDT® DemoBus & Mobile Demo Equipment

The **SCHMIDT® DemoBus or traveling product** will come to your premises and save you time and travel.

At your convenience, you will:

- Experience the wide range and benefits of **SCHMIDT® Presses** and accessories
- Get a wide overview over our products
- See the innovative news and trends
- Discuss your assembly applications with our experts
- Conduct trials (by prior arrangements)

# SCHMIDT Technology

How to find us

**SCHMIDT Technology Corporation** provides representation throughout the United States, Canada, Mexico, Puerto Rico, Central and South America. See our website for the local representative near you.



**SCHMIDT Technology Corporation** is located within one mile of the intersection of Interstate I-76 and I-79. Find detailed directions to our facility on our website: [www.schmidtpresses.com](http://www.schmidtpresses.com)



## Addresses of the subsidiaries and representations

### Australia, New Zealand

Bliss & Reels Co. Pty.  
9 Kim Close  
AU-3105 Bulleen, Victoria  
Fon +61 (3) 98 50 66 66  
sales@blissandreels.com.au

### Austria

Maxxom Automation GmbH  
Gewerbegebiet  
Salzweg 1  
A-4894 Oberhofen am Irsee  
Fon +43 6213 20053 0  
office@maxxom-automation.at

### Benelux

Germo Techniek BV  
Zwarte Zee 38-40  
NL-3144 DE Maassluis  
Fon +31 (10) 5937260  
pbos@germotechniek.nl

### China

Weihai Lianquiao Naka Precision  
Optical Machinery Co. Ltd.  
Suzhou Branch  
Rm.8201 No.16-1 Feng jin Rd,  
Wu Zhong District, Suzhou City,  
Jiangsu Province, China 215128  
Fon +86-512-66171260  
sunyx@lianquiao.naka.net

### Czech Republic

Presston spol. s.r.o.  
Božetěchova 50  
CZ-61200 Brno  
Fon +420 541 248 853  
presston@presston-stroje.cz

### Denmark

Dannemand & Vejsager A/S  
Baldershoj 1  
DK-2635 Ishoj  
Fon +45 (43) 99 80 00  
info@kdtool.dk

### France

SCHMIDT Technology SAS  
4 Rue de l'Artisanat  
67116 Reichstett (Strasbourg)  
Fon +33 (0) 3 88 62 68 53  
info@schmidttechnology.fr

### Hungary, Bulgaria

Eckerle Industrie Bt.  
Dózsa György út 44  
HU-6200 Kiskörös  
Fon +36 (78) 511 400  
info@hu.eckerle-gruppe.com

### India

LEAPTECH CORPORATION  
812 Cosmos, Sector 11  
CBD Belapur,  
New Mumbai 400 614  
India  
Fon +91(22) 2756 2822  
leaptech@vsnl.net

### Indonesia

PT Supra Engineering  
Jl. Pecenongan No. 17 D  
ID-10120 Jakarta  
Fon +62 (21) 385 2530  
atsupra@supra.co.id

### Italy

MyAutomation s.r.l.  
Via Paisiello 110  
I-20092 Cinisello Balsamo (MI)  
Fon +39 (0266) 043032  
andrea.rosso@myautomation.it

### Israel

Tamir Eran Engineering &  
Development Ltd  
7 Hamifalim St. Kiriati-Arie  
48179 Petach-Tikva  
Fon +972 3 922 9422  
tamireng@netvision.net.il

### Japan

Naka Seiki Co. Ltd.  
1-2-17 Kinda-cho, Moriguchi-shi  
JP-570-0011 Osaka  
Fon + 81 (06) 69 01 18 75  
honsha@nakaseiki.co.jp

### Malaysia, Thailand, Philippines

NSW Automation Sdn. Bhd.  
Off Jalan Permatang Damar Laut,  
Diamond Valley Light Industrial Park,  
Batu Maung, 11960 Penang, Malaysia  
Fon +60 4-6 26 69 63  
mathew@nswautomation.com

### Norway

Stang Maskin AS  
Stang Maskin AS  
Åsveien 2  
N-3475 Sætre  
Fon +47 66 77 73 10  
post@stang-maskin.no

### Poland

Przedsiębiorstwo AMS Sp. z o.o.  
Jagodnik 17C  
PL-58-100 Swidnica  
Fon +48 (74) 853 4715  
ams@ams-at.pl

### Romania

S.C. Eckerle Romania S.R.L.  
Bd. Muncii Nr. 1-15  
RO-400641, Cluj-Napoca, Jud Cluj  
Fon +40 (264) 403 403  
info@ro.eckerle-gruppe.com

### Singapore

Bosch Rexroth Pte LTD  
15 D Tuas Road  
Singapore 638520  
Fon +65 (6) 861 8733  
info@boschrexroth.com.sg

### Slovakia

MTS, spol. s.r.o.  
Krivá 53  
SK-02755 Krivá  
Fon +421 (435) 819 111  
mts@mts.sk

### Slovenia, Croatia, Bosnia, Serbia

MB-Naklo d.o.o.  
Ulica Toma Zupana 16  
SI-4202 Naklo  
Fon +386 (0) 4 277 17 00  
mb-naklo@mb-naklo.si

### South Africa

DES Automation  
No. 3 Produce Street, Baakens Valley  
6001 Port Elizabeth  
Fon +27 (41) 585 6955  
morne@desec.co.za

### South Korea

Tae Jin Industry Co. Ltd.  
403 Kyungbok Building  
#330-5 Doksan 1-Dong,  
Kumchun-Gu,  
KR-Seoul  
Fon +82 (2) 894 88 39  
taejin@schmidt.co.kr

### Spain, Portugal

ATSI  
Luis Merelo y Mas, 6  
E-46023 Valencia  
Fon +34 (96) 337 04 00  
atsi@atsi.es

### Sweden

Deprag Scandinavia AB  
Gap Sundins Väg 3  
SE-633 46 Eskilstuna  
Fon +46 (16) 126110  
info@deprag.se

### Switzerland

SCHMIDT Technology GmbH  
Gerbeckerstraße 8  
3210 Kerzers  
Fon +41 (0) 31 / 7 55 40 71  
infoCH@schmidttechnology.ch

### Taiwan

I-Hen Machine Co. Ltd.  
6F-9, No. 12, Lane 609, Sec. 5  
Chung Hsin Road, San-Chung City  
Taipei  
Fon +886 (22) 999 6766  
ihenco@ms9.hinet.net

### Tunisia, Morocco, Algeria, Egypt, Jordan, Saudi Arabia, United Arab Emirates

EP-Technologie  
29 AV. AHMED TLILI  
Zone Industriell Borj Cedria  
2055 Bir EL Bey - Ben Arous  
TUNISIA  
Fon +216 (79) 41 28 89  
info@EP-Technologie.com

### Turkey

Günmak Industrial Tool Pump and  
Automation System Inc.  
Toros Caddesi No. 78  
TR-34846 K.Maltepe - Istanbul  
Fon +90 (216) 370 76 76  
info@gunmak.com.tr

### Ukraine

Dnipropetrovsk Engineering &  
Technical Center "Contact" JSC  
Kabardyn's'ka str. 5  
UA- 4900 Dnipropetrovsk  
Fon +38 (05 62) 31 76 00  
admin@kontakt.dp.ua

### United Kingdom

SCHMIDT Technology Ltd.  
Unit 40 Easter Park  
Benyon Road  
Silchester  
Reading  
Berks RG7 2PQ  
Fon +44 (0)118 930 5464  
sales@schmidttechnology.co.uk

### USA

SCHMIDT Technology Corp.  
Cranberry Corporate Center  
280 Executive Drive  
Cranberry Twp., PA 16066  
Fon +1(724) 7 72-46 00  
info@schmidtpresses.com

**SCHMIDT Technology GmbH**

Feldbergstrasse 1  
78112 St. Georgen, Germany  
Tel. +49 (77 24) 899 0  
Fax +49 (77 24) 899 101  
info@schmidttechnology.de  
www.schmidttechnology.de

**SCHMIDT Technology Corp.**

Cranberry Corporate Center  
280 Executive Drive  
Cranberry Twp., PA 16066  
USA

Tel. +1 (724) 772-46 00  
Tel. +1 (800) 959-12 18  
Fax +1 (724) 772-46 88  
info@schmidtpresses.com  
www.schmidtpresses.com

**SCHMIDT Technology Ltd.**

Unit 40 Easter Park, Benyon Road  
Silchester, Reading  
Berks RG7 2PQ  
UK

Tel. +44 (118) 9305-464  
Fax +44 (118) 9305-440  
sales@schmidttechnology.co.uk  
www.schmidttechnology.co.uk

**SCHMIDT Technology GmbH**

Niederlassung Schweiz  
Gerbeackerstrasse 8  
3210 Kerzers, Switzerland

Tel. +41 (0)31 755 40 71  
Fax +41 (0)31 755 40 73  
infoCH@schmidttechnology.ch  
www.schmidttechnology.ch

**SCHMIDT Technology SAS**

4 Rue de l'Artisanat  
67116 Reichstett (Strasbourg)  
France

Tél. +33 (0) 3 88 62 68 53  
Fax +33 (0) 3 88 83 76 12  
info@schmidttechnology.fr  
www.schmidttechnology.fr