

SCHMIDT® ServoPress

Modules with large Application Range



Press Typ 405

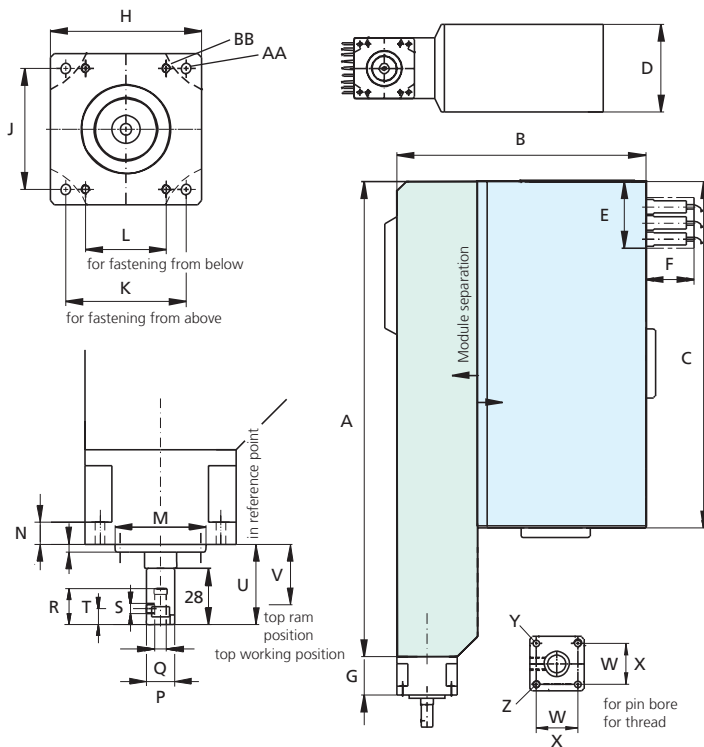
Press Typ 415/416

Press Typ 417

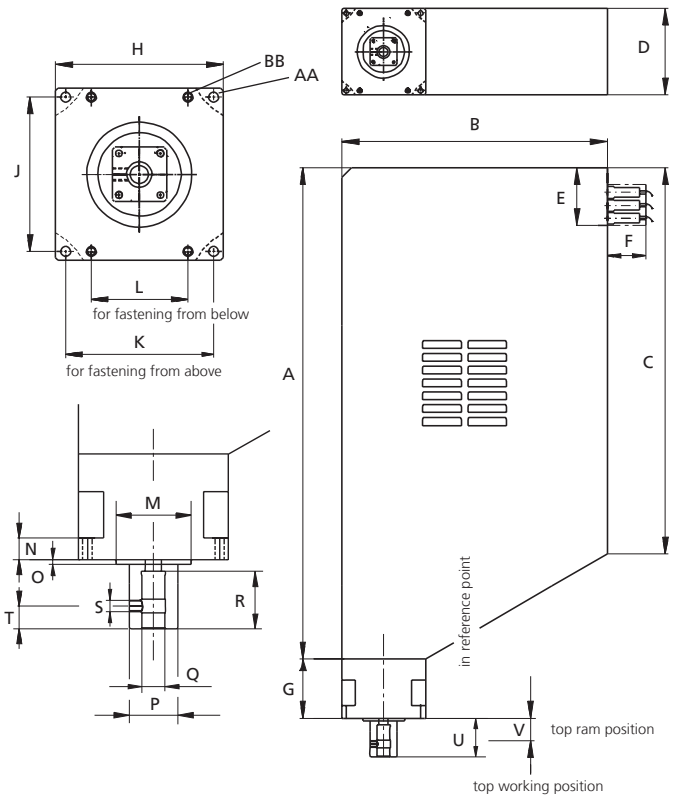
Press Typ 420

Press Typ 450/460

ServoPress 405



ServoPress 415 to 460



Modules

With Force Outputs of 15 kN to 150 kN

Servopress Type		405	415	416	417	420	450	460
Force F	F max. kN	0.8	4.5	5	14	35	75	150
Force F at 100% duty cycle	F kN	0.5	1.5	3	7.5	20	50	100
Ram stroke	mm	150	200	200	300	400	500	500
Resolution (drive control)	µm	< 0.1	< 0.1	< 0.1	< 0.1	< 0.1	< 0.1	< 0.1
Resolution data acquisition								
- Stroke	µm/inc	2.4	4	4	5	6	8	8
- Force	N/inc	0.25	1	1	3.75	10	24	48
Ram speed	mm/s	0 - 300	0 - 200	0 - 200	0 - 200	0 - 200	0 - 200	0 - 100
Overload protection		-	Mech. clutch	Mech. clutch	Mech. clutch	Mech. clutch	Mech. clutch	Mech. clutch
Service life of the cycles acc. to standard operating profile		2×10^7	2×10^7	2×10^7	2×10^7	2×10^7	2×10^7	1×10^7
Drive		ball screw	ball screw	ball screw	ball screw	roller screw	roller screw	roller screw
Power supply		230 V 1~/6.3 A 208 V 3~/6.3 A	230 V 1~/6.3 A 208 V 3~/6.3 A	230 V 1~/6.3 A 208 V 3~/6.3 A	230 V 1~/16 A	400 V 3~/16 A	400 V 3~/35 A	400 V 3~/35 A
Weight (standard)	approx. kg	20	27	27	70	120	240	240

Module Dimensions

Servopress Type		405	415 / 416	417	420	450 / 460
Housing						
	A mm	590	560	762	978	1166
	B mm	309	330	412	535	677
	C mm	440	434	600	763	992
	D mm	109	109	134	180	236
Cable connection						
	E mm	~ 75	~ 75	~ 90	~ 100	~ 90
	F mm	~ 60	~ 60	~ 60	~ 60	~ 60
Flange						
	G mm	47	77	92	122	120
	H mm	75	75	130	140	150
	J mm ±0.1	60	88	120	160	210
	K mm ±0.1	60	63	115	120	130
	L mm ±0.1	40	59.4 x 59.4	75		
	M Ø mm	45H7	45H7	65H7	90H7	100H7
	N mm	11	11	19	32	33
	O mm	4	4	4	5	5
	AA Ø mm	5.3	6.3	8.4	10.1	12.0
	BB Ø mm	M5	M6	M8	M12	M14
Ram						
External ram dimensions	P mm	Ø 14	32 x 32	42 x 42	55 x 55	65 x 65
Ram bore (with bushing)	Q Ø mm	6H7	10H7	20H7	20H7	20H7
	R mm	18	30	50	40	50
	S	M5	M8	M10	M10	M10
	T mm	8	10	20	20	20
Top working position	U mm	40	50	60	60	60
Top ram position	V mm	30	39	33	45	45
for pin bore	W mm ±0.02		22	32	40	40
for thread	X mm		22	32	40	40
	Y		M5	M6	M8	M8
	Z Ø mm		5H7	5H7	8H7	8H7

Standard Operating Profile

