

# SCHMIDT® PneumaticPress

Pneumatic toggle presses with maximum force at the end of stroke



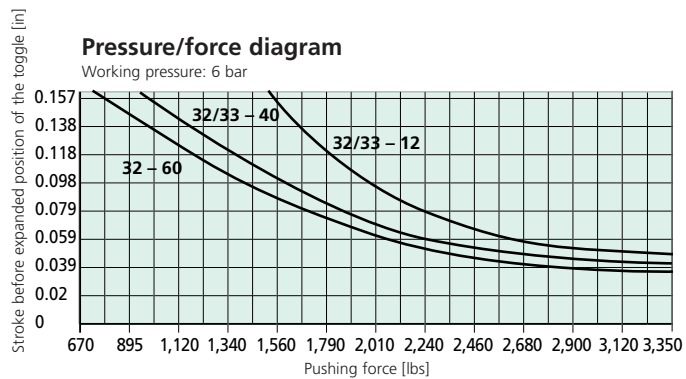
**Fine adjustment**  
for press No. 33 with scale  
1 division line = 0.02 mm /  
0.0008"



**Flexible stroke adjustment**  
reduces the air consumption  
for shorter strokes.

**Features:**

- T-Slot with set screw in fixture mounting platen to secure bottom tool.



# Up to 15 kN / 3375 lbs



Press type			32	33
Working stroke	A	mm / inch	0-12 / 0 - 0.47 4-40 / 0.16 - 1.57 6-60 / 0.24 - 2.36	0-12 / 0 - 0.47 4-40 / 0.16 - 1.57
Nominal force at 87 psi		lbs	3375	3375
Throat depth	C	inch	3.38	3.38
Throat depth frame	○	inch	4.37 / 5.16 6.30 / 7.90	4.37 / 5.16 6.30 / 7.90
Additional fixture mounting platen suitable for throat depth frame			○	○
Ram bore		Ø mm	20H7	20H7
External ram dimensions		inch	Ø 1.52	Ø 1.52
Fine adjustment				●
<b>Working height F</b>				
Frame No. 3		inch	3.54 - 8.27	
Frame No. 2		inch	4.72 - 13.35	3.15 - 11.42
Frame No. 2-600	○	inch	8.27 - 23.62	8.27 - 23.62
Frame No. 2-1000	○	inch	13.39 - 40.16	11.42 - 38.19
Weight (standard)		approx. lbs	99	110

Frame overview						
Frame type	Press type	Frame height M	Table size W x D	Table bore	Table height K	Mounting surface W x L
No. 3	32	21.26	5.9 x 4.3	20H7	2.36	5.9 x 10.2
No. 2	32, 33	27.56	7.3 x 4.3	20H7	2.36	7.3 x 11.0
No. 2-600	32, 33	31.89	7.9 x 6.3	20H7	2.36	7.9 x 11.4
No. 2-1000	32, 33	49.13	7.9 x 6.3	20H7	2.36	7.9 x 11.4

### Options

- = Series standard with no additional charge
- = Additional charge applies

### Other Available Options:

- **Nickel plated** – Cast parts are electroless nickel plated, steel components black oxide finished, aluminum anodized, precision steel surfaces are untreated
- **Custom Paint** – Press and column can be painted to customer's color specification
- **Bores for Adapting Tooling** – Customer specific sizes can be supplied

### 5/8 inch bushing available upon request for imperial version.

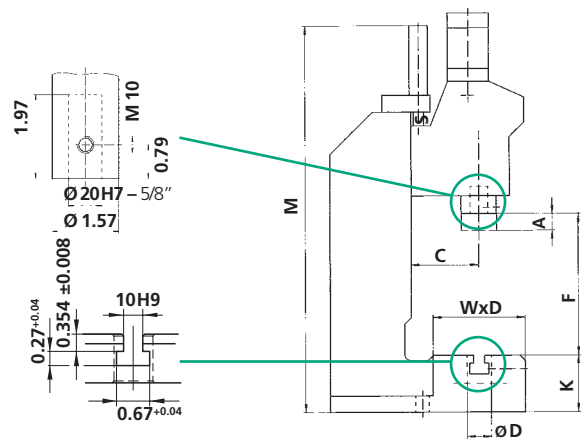
Please consult our sales department or representative.

### Tolerance conversion of typical sizes of SCHMIDT® Presses

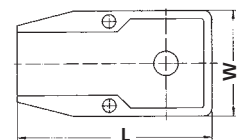
Metric	Nominal Inch	Tolerance Inch
10H7	0.3937	-0 / +0.0006
20H7	0.7874	-0 / +0.0008
25H7	0.9842	-0 / +0.0008
32H7	1.2598	-0 / +0.0010
40H7	1.5748	-0 / +0.0010
10H9	0.3937	-0 / +0.0014
14H9	0.5512	-0 / +0.0017

Threads	Pitch
M8	1.25 mm
M10	1.50 mm

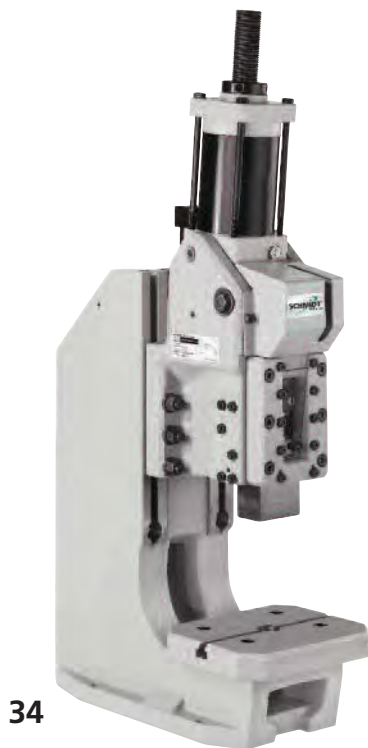


Dimensions are converted from metric units, most are approximate. Detailed dimensional drawings can be downloaded from our website: [www.schmidtpresses.com](http://www.schmidtpresses.com)



# SCHMIDT® PneumaticPress

Pneumatic toggle presses with maximum force at the end of stroke



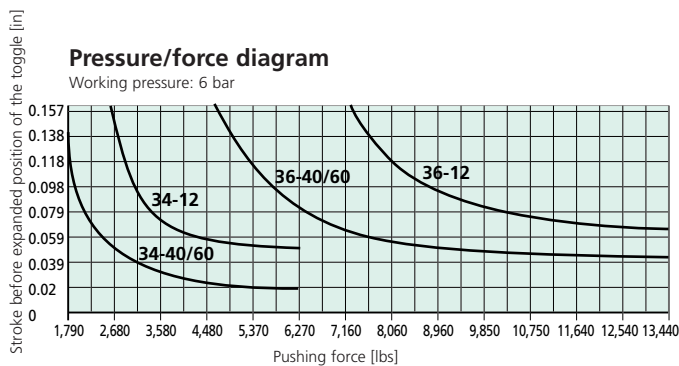
Rectangular ram



Fine adjustment

**Features:**

- Anti-rotational rectangular ram with fully adjustable, Teflon lined gibs for precise travel, no die set required
- Exact positioning due to fine adjustment scale (1 division line = 0.05 mm / 0.002")



From 28 kN to 60 kN / 6,295 lbs. to 13,490 lbs.



Press type		34	36
Working stroke	A	mm / inch	
		0-12 / 0 – 0.47	0-12 / 0 – 0.47
		4-40 / 0.16 – 1.57	4-40 / 0.16 – 1.57
		6-60 / 0.24 – 2.36	6-60 / 0.24 – 2.36
Nominal force at 87 psi		lbs	
		6295	13490
Throat depth	C	inch	
		5.16	6.30
Throat depth frame ○		inch	
		5.94	7.28
Fixture mounting platen suitable for throat depth frame		○	○
Ram bore		Ø mm	
		20H7	20H7
External ram dimensions	G x H	inch	
		1.42 x 2.48	1.81 x 3.39
<b>Working height</b>	<b>F</b>		
<b>Frame No. 34</b>		inch	
		3.9 – 9.8	
Frame No. 301		inch	
		6.3 – 15.7	
Frame No. 301-500		inch	
		12.2 – 21.6	
<b>Frame No. 35</b>		inch	
			3.9 – 9.8
Frame No. 35-500		inch	
			5.9 – 19.7
Frame No. 35-600		inch	
			9.8 – 23.6
Weight (standard)		approx. lbs	
		200	330

Frame overview						
Frame type	Press type	Frame height M	Table size W x D	Table bore	Table height K	Mounting surface W x L
		inch	inch	Ø mm	inch	inch
<b>No. 34</b>	34	24.8	7.87 x 6.30	25H7	4.32	7.87 x 14.57
No. 301	34	32.7	9.84 x 7.87	40H7	5.71	9.84 x 18.11
No. 301-500	34	39.0	9.84 x 7.87	40H7	5.71	9.84 x 18.50
Special fixture mounting platen with 3 longitudinal slots ○			11.81 x 8.66	40H7		
			15.75 x 9.05	40H7		
<b>No. 35</b>	36	27.6	11.81 x 8.66	40H7	5.55	11.8 x 18.9
No. 35-500	36	39.0	11.81 x 8.66	40H7	6.54	11.8 x 22.0
No. 35-600	36	43.7	11.81 x 8.66	40H7	6.54	11.8 x 23.0
Special fixture mounting platen with 3 longitudinal slots ○			13.97 x 8.86	40H7		
			15.75 x 11.02	40H7		

**Options**

○ = Additional charge applies

**Other Available Options:**

- **Nickel plated** – Cast parts are electroless nickel plated, steel components black oxide finished, aluminum anodized, precision steel surfaces are untreated
- **Custom Paint** – Press and column can be painted to customer's color specification
- **Bores for Adapting Tooling** – Customer specific sizes can be supplied

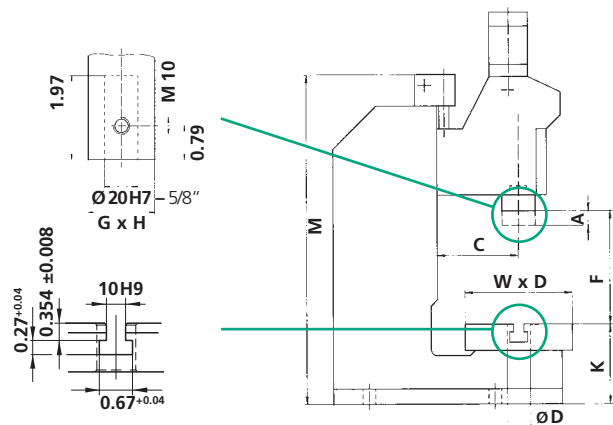
**5/8 inch bushing available upon request for imperial version.**

Please consult our sales department or representative.

**Tolerance conversion of typical sizes of SCHMIDT® Presses**

Metric	Nominal Inch	Tolerance Inch
10H7	0.3937	-0 / +0.0006
20H7	0.7874	-0 / +0.0008
25H7	0.9842	-0 / +0.0008
32H7	1.2598	-0 / +0.0010
40H7	1.5748	-0 / +0.0010
10H9	0.3937	-0 / +0.0014
14H9	0.5512	-0 / +0.0017

Threads	Pitch
M8	1.25 mm
M10	1.50 mm



Dimensions are converted from metric units, most are approximate. Detailed dimensional drawings can be downloaded from our website: [www.schmidtpresses.com](http://www.schmidtpresses.com)

