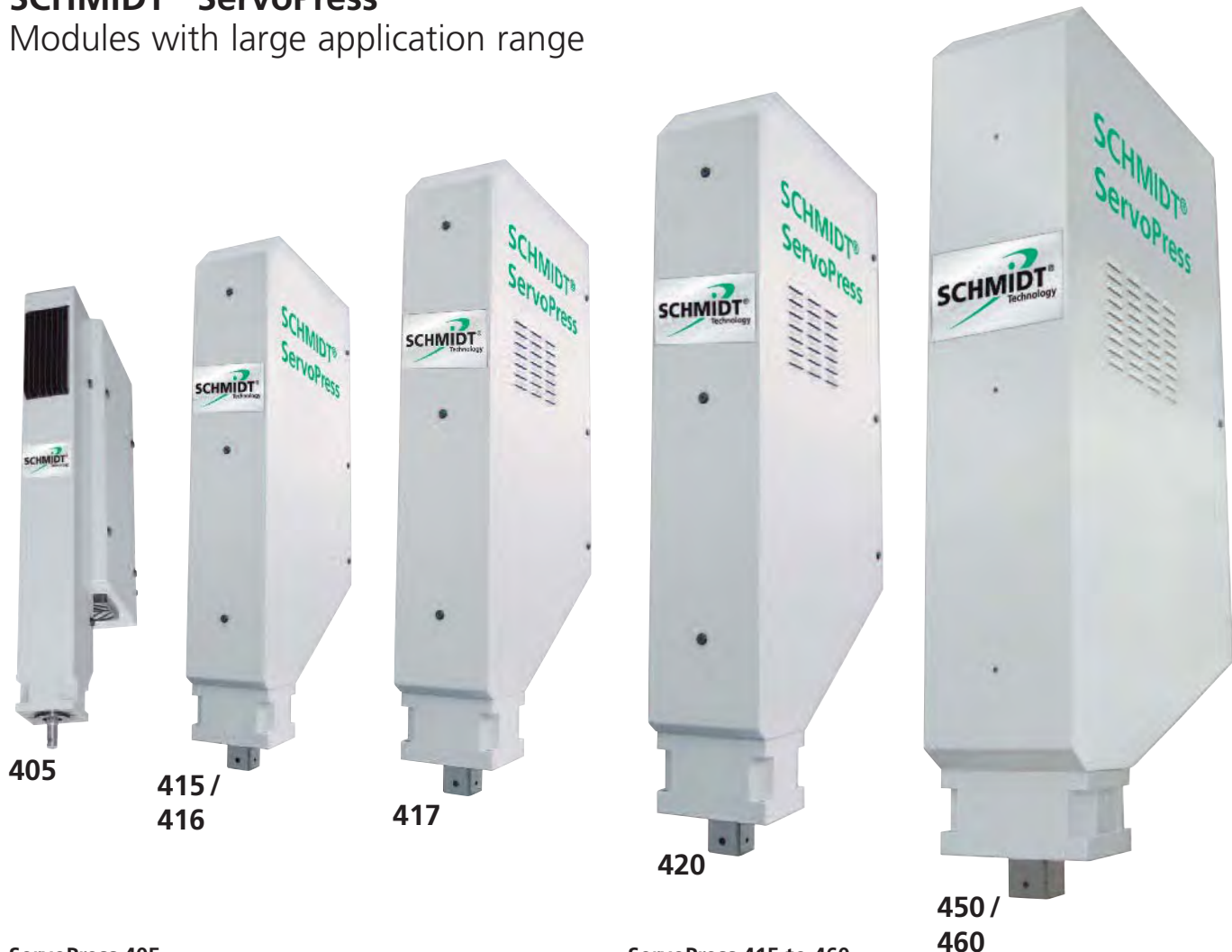
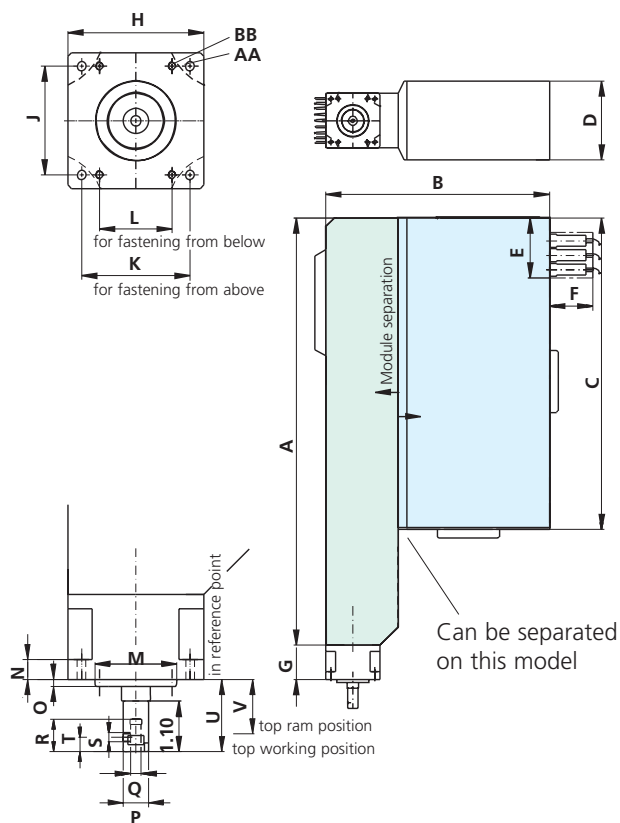


# SCHMIDT® ServoPress

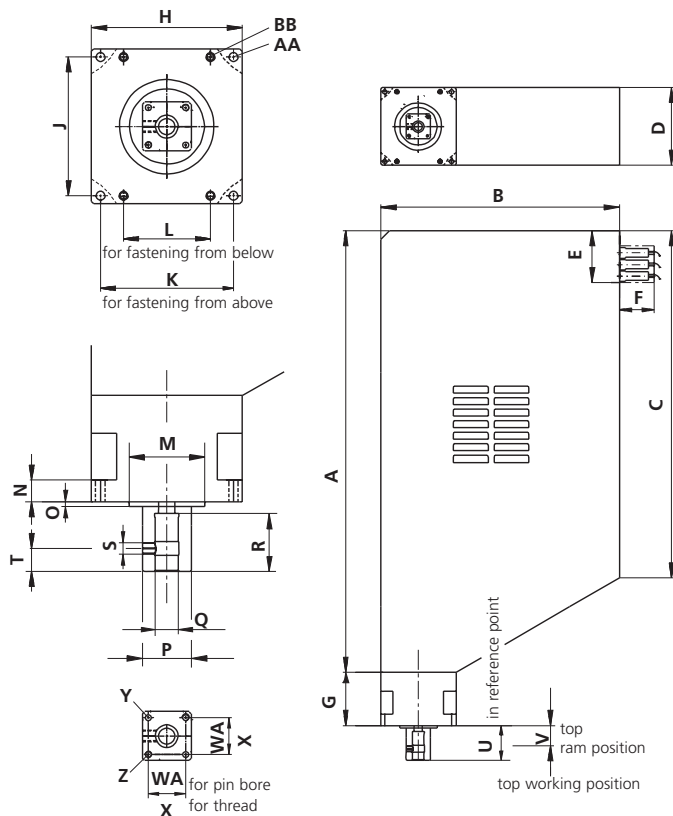
Modules with large application range



ServoPress 405



ServoPress 415 to 460



## Modules

With force outputs from 15 N to 150 kN / ounces up to 33,720 lbs.

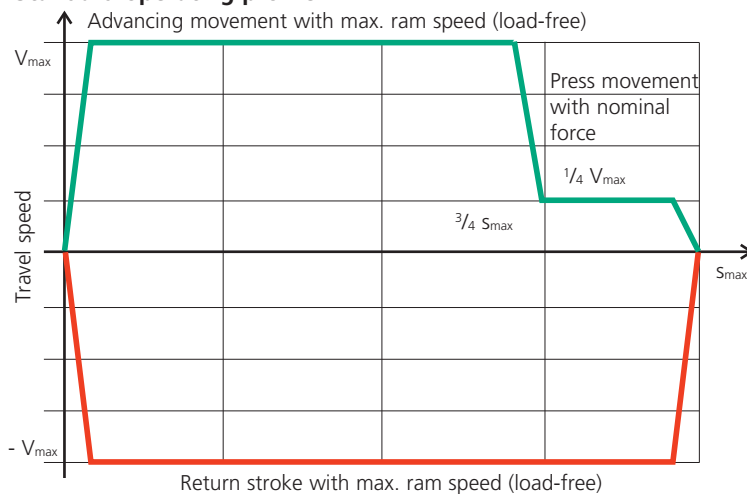
### Technical data

ServoPress type		405	415	416	417	420	450	460
Force F	max lbs	180	1010	1125	3150	7870	16860	33720
Force F at 100% duty cycle	lbs	110	335	675	1685	4495	11240	22480
Ram stroke	mm/inch	150/5.91	200/7.87	200/7.87	300/11.81	400/15.75	500/19.68	500/19.68
Resolution (drive control)	µm	< 0.1	< 0.1	< 0.1	< 0.1	< 0.1	< 0.1	< 0.1
Resolution, process data acquisition								
- stroke	inch/inc	0	0	.0002	.0002	.0002	.0003	.0003
- force	lbs/inc	0.06	.22	.22	.90	2.25	5.39	10.79
Ram speed	inch/s	0 to 11.81	0 to 7.87	0 to 7.87	0 to 7.87	0 to 7.87	0 to 7.87	0 to 3.94
Overload protection		-	Mech. clutch	Mech. clutch	Mech. clutch	Mech. clutch	Mech. clutch	Mech. clutch
Service life of the cycles acc. to standard operating profile		2 x 10 <sup>7</sup>	2 x 10 <sup>7</sup>	2 x 10 <sup>7</sup>	2 x 10 <sup>7</sup>	2 x 10 <sup>7</sup>	2 x 10 <sup>7</sup>	1 x 10 <sup>7</sup>
Drive		ball screw	ball screw	ball screw	ball screw	roller screw	roller screw	roller screw
Power supply		230 V 1~/ 6.3 A (3x208 V 3~/6.3 A)	230 V 1~/ 16 A (3x208 V 3~/16 A)	230 V 1~/ 16 A (3x208 V 3~/16 A)	400 V 3~/16 A	400 V 3~/16 A	400 V 3~/35 A	400 V 3~/35 A
Weight	approx. lbs	44	60	60	154	265	529	529

### Module dimensions

ServoPress type		405	415 / 416	417	420	450 / 460
<b>Housing</b>						
<b>A</b>	inch	23.23	22.05	30.00	38.50	45.91
<b>B</b>	inch	12.17	12.99	16.22	21.06	26.65
<b>C</b>	inch	17.32	17.09	23.62	30.04	39.06
<b>D</b>	inch	4.29	4.29	5.28	7.09	9.29
<b>Cable connection</b>						
<b>E</b>	inch	~ 3	~ 3	~ 3	~ 4	~ 3
<b>F</b>	inch	~ 2.5	~ 2.5	~ 2.5	~ 2.5	~ 2.5
<b>Flange</b>						
<b>G</b>	inch	1.85	3.03	3.62	4.80	4.72
<b>H</b>	inch	2.95	2.95	5.12	5.51	5.91
<b>J</b>	inch	2.36	3.46	4.72	6.30	8.27
<b>K</b>	inch	2.36	2.48	4.53	4.72	5.12
<b>L</b>	inch	1.57	2.34	2.95		
<b>M</b>	Ø mm	45h7	45h7	65h7	90h7	100h7
<b>N</b>	inch	0.43	0.43	0.75	1.26	1.30
<b>O</b>	inch	0.16	0.16	0.16	0.20	0.20
<b>AA</b>	Ø inch	0.21	0.25	0.33	0.39/M12	0.47/M14
<b>BB</b>	Ø mm	M5	M6	M8		
<b>Ram</b>						
External ram dimensions	<b>P</b> inch	Ø 0.55	1.26 x 1.26	1.65 x 1.65	2.17 x 2.17	2.56 x 2.56
Ram bore	<b>Q</b> Ø mm	6H7	10H7	20H7	20H7	20H7
	<b>R</b> inch	0.71	1.18	1.97	1.57	1.97
	<b>S</b>	M5	M8	M10	M10	M10
	<b>T</b> inch	0.31	0.39	0.79	0.79	0.79
Top working position	<b>U</b> inch	1.57	1.97	2.36	2.36	60
Top ram position	<b>V</b> inch	1.18	1.48	1.38	1.97	1.77
For pin bore	<b>W</b> inch		0.87 ± 0.0008	1.26 ± 0.008	1.57 ± 0.008	1.57 ± 0.0008
for thread	<b>X</b> inch		0.87	1.26	1.57	1.57
	<b>Y</b>		M5	M6	M8	M8
	<b>Z</b> Ø mm		5H7	5H7	8H7	8H7

### Standard operating profile



### Tolerance conversion of typical sizes of SCHMIDT® Presses

Metric	Nominal Inch	Tolerance Inch
5H7	0.1968	-0 / +0.0005
8H7	0.3149	-0 / +0.0006
10H7	0.3937	-0 / +0.0006
20H7	0.7874	-0 / +0.0008
25H7	0.9842	-0 / +0.0008
32H7	1.2598	-0 / +0.0010
40H7	1.5748	-0 / +0.0010
45H7	1.7716	-0 / +0.0012
65H7	2.5590	-0 / +0.0010
90H7	3.5433	-0 / +0.0014
100H7	3.9370	-0 / +0.0014
<b>Threads</b>		<b>Pitch</b>
M8		1.25 mm
M10		1.50 mm
M5		0.80 mm
M6		1.00 mm