

## Force Monitoring and more throat for your larger assemblies



SQM700 Peak Load Press Force Monitor and TT44 Load Cell

### Specifications for TT44 Load Cell:

- Capacities: 1K, 2K, 5K, 10K, 15K or 22K lb.
- Output: 2 mV/V
- Non-linearity: 0.25 % full scale
- Non-repeatability: 0.01% full scale
- Deflection at maximum load: 0.001 inch
- 5 ft stainless steel metal flex hose and sensor cable

The SQM700 Peak Load Monitor can be preset to high and low limits. Peak force is captured during the press cycle, then compared to preset limits. Based on the result, a relay output is set. Fault conditions need to be reset. Beginning and end of monitoring window can be defined via force threshold, position sensor input or a combination of the two. Load cell is sold separately.

### TT44 Load Cell / Tool Holder

This load cell can easily be installed in the press ram. The load cell essentially is a 2" extension of the press ram, as there is a precision shank on the top side and a bore on the bottom side of the same diameter as the ram bore.

### Specifications for SQM700 Monitor:

- 6 Digit Display
- Single channel operation
- Power supply: 110 / 220 V AC
- Ready for ram positioning switch interface
- NO / NC relay status output
- Peak hold
- Non-linearity: 0.02 % full scale
- Peak capture rate: 33 Hz probe trigger
- Peak capture rate: 6 Hz threshold trigger

## SCHMIDT® Spacers



### SCHMIDT® Spacers for Additional Throat Clearance

A spacer is used in case the standard throat depth is not adequate for the application. Throat depth is measured from press ram centerline to surface on which the press head gets mounted.



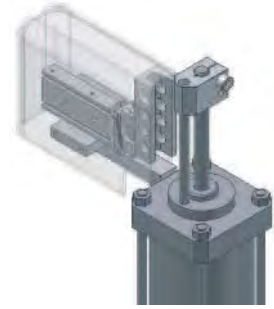
# SCHMIDT® PneumaticPress and ManualPress Accessories



**Electronic Stroke Completion Sensor**  
 Will confirm that the end of the stroke has been reached. Installed into hardened mounting block on top of fine adjustment screw on the Model No. 20-29. Triggered via the stroke limit block of the press. Automatically accepts changes in stroke adjustments.



**Intermediate Stop**  
 for two-stroke or safety stop sequential operations.



**Hydro-Pneumatic High Pressure Sensor**  
 Verifies that pressure and/or press force has been reached before press ram returns. Can be used as an interface device to commence press timer, or added operator safety when using a two hand control device.



**Speed control**  
 This accessory in conjunction with a pneumatic press can be a very cost effective solution to good ram speed control.

- A speed control on a pneumatic press provides the following benefits:
- Completely eliminate slip-stick effect
  - Better accuracy in conjunction with force or distance control
  - Improved cycle times, as it allows rapid approach, reduced speed for actual process

*Cover has been removed for illustration purposes*



**DIE PLATE MALE COUPLING 1540**



**DIE PLATE MALE COUPLING 1554**



**RAM FEMALE COUPLING 1560**

For **SCHMIDT® Presses** that are tooled with column-guided die sets, optional Modular Coupling Devices can be attached for quick, easy removal and installation of die sets.

DIE PLATE MALE Coupling	RAM FEMALE Coupling	Press Model
SN 1540-16 X 1.5	SN 1560-20	All pneumatic presses except 64 – 76
SN 1554-63	SN 1560-32	
SN 1540-16 X 1.5	SN 1560-25	64 & 74
SN 1554-63	SN 1560-25	
SN 1540-20 X 1.5	SN 1560-32	76
SN 1554-80	SN 1560-32	

More accessories available. Contact us for additional information