

SCHMIDT® Pneumatic Press & Manual Press

Accessories



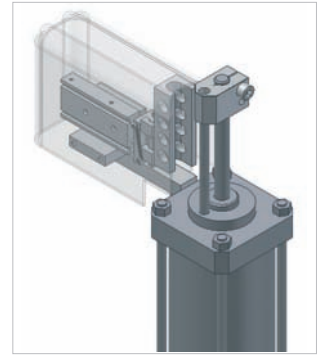
Electronic Stroke Completion Sensor

Will confirm that the end of the stroke has been reached. Installed into hardened mounting block on top of fine adjustment screw on the Model No. 20 – 29. Triggered via the stroke limit block of the press. Automatically accepts changes in stroke adjustments.



Intermediate Stop

for two-stroke or safety stop sequential operations.



Speed Control

This accessory in conjunction with a pneumatic press can be a very cost effective solution to good ram speed control.

A speed control on a pneumatic press provides the following benefits:

- Completely eliminate slip-stick effect
- Better accuracy in conjunction with force or distance control
- Improved cycle times, as it allows rapid approach, reduced speed for actual process



Hydro-Pneumatic High Pressure Sensor

Verifies that pressure and/or press force has been reached before press ram returns. Can be used as an interface device to commence press timer, or added operator safety when using a two hand control device.

SCHMIDT® PneumaticPress & ManualPress

Accessories



DIE PLATE MALE
COUPLING 1540



DIE PLATE MALE
COUPLING 1554



RAM FEMALE
COUPLING 1560

For **SCHMIDT®** Presses that are tooled with column-guided die sets, optional Modular Coupling Devices can be attached for quick, easy removal and installation of die sets.

DIE PLATE MALE Coupling	RAM FEMALE Coupling	Press Model
SN 1540-16 X 1.5 SN 1554-63	SN 1560-20 SN 1560-32	All PneumaticPresses except 64 – 76
SN 1540-16 X 1.5 SN 1554-63	SN 1560-25 SN 1560-25	64 & 74
SN 1540-20 X 1.5 SN 1554-80	SN 1560-32 SN 1560-32	76

More accessories available. Contact us for additional information.

More Throat: SCHMIDT® Spacers

SCHMIDT® Spacers for Additional Throat Clearance A spacer is used in case the standard throat depth is not adequate for the application. Throat depth is measured from press ram centerline to surface on which the press head gets mounted.

