

# SCHMIDT® ServoPress

Modules with large Application Range



Press Type 405



Press Type 415/416



Press Type 417

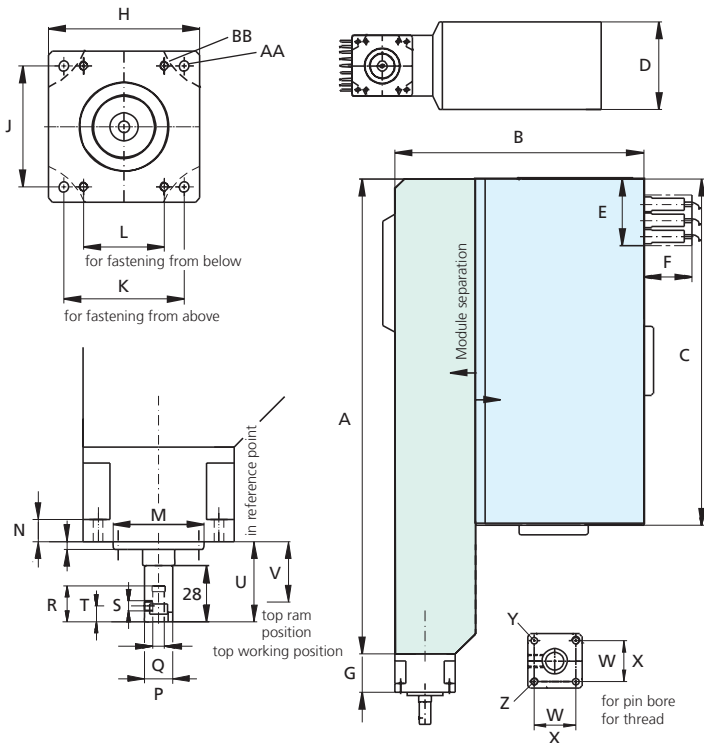


Press Type 420

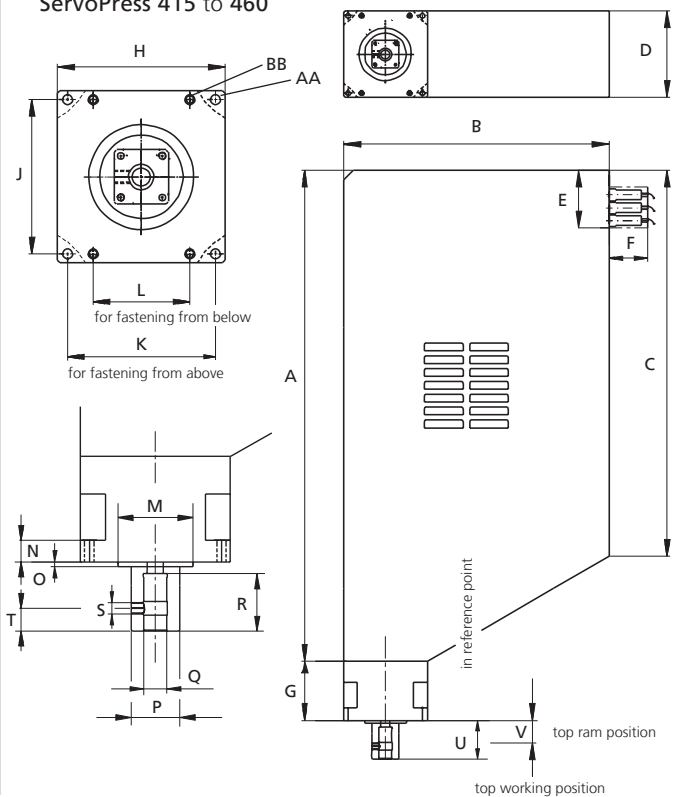


Press Type 450/460

## ServoPress 405



## ServoPress 415 to 460



# Modules

With Force Outputs of 15 N to 150 kN / ounces up to 33,720 lbs.

Servopress Type			405	415	416	417	420	450	460
Force F	F	max. lbs	180	1,010	1,125	3,150	7,870	16,860	33,720
Force F at 100% duty cycle	F	lbs	110	340	675	1,690	4,500	11,240	22,480
Ram stroke		mm/inch	150/5.90	200/7.87	200/7.87	300/11.81	400/15.74	500/19.68	500/19.68
Resolution (drive control)		inch	< 0.1	< 0.1	< 0.1	< 0.1	< 0.1	< 0.1	< 0.1
Resolution data acquisition									
- Stroke		inch/inc	< 0.0001	0.0001	0.0001	0.0001	0.0002	0.0003	0.0003
- Force		lbs/inc	0.06	0.22	0.22	0.90	2.25	5.39	10.79
Ram speed		inch/s	0 - 11.81	0 - 7.87	0 - 7.87	0 - 7.87	0 - 7.87	0 - 7.87	0 - 3.93
Overload protection			-	Mech. clutch	Mech. clutch	Mech. clutch	Mech. clutch	Mech. clutch	Mech. clutch
Service life of the cycles acc. to standard operating profile			2 x 10 <sup>7</sup>	2 x 10 <sup>7</sup>	2 x 10 <sup>7</sup>	2 x 10 <sup>7</sup>	2 x 10 <sup>7</sup>	2 x 10 <sup>7</sup>	1 x 10 <sup>7</sup>
Drive			ball screw	ball screw	ball screw	ball screw	roller screw	roller screw	roller screw
Power supply			230 V 1~/6.3 A 208 V 3~/6.3 A	230 V 1~/6.3 A 208 V 3~/6.3 A	230 V 1~/6.3 A 208 V 3~/6.3 A	230 V 1~/16 A	400 V 3~/16 A	400 V 3~/35 A	400 V 3~/35 A
Weight (standard)		approx. lbs	44	60	60	154	265	530	530

## Module Dimensions

Servopress Type			405	415 / 416	417	420	450 / 460
<b>Housing</b>							
	A	inch	23.22	22.04	29.99	38.50	45.90
	B	inch	12.16	12.99	16.22	21.06	26.65
	C	inch	17.32	17.08	23.62	30.03	39.05
	D	inch	4.29	4.29	5.27	7.08	9.29
<b>Cable connection</b>							
	E	inch	~ 2.95	~ 2.95	~ 3.54	~ 3.93	~ 3.54
	F	inch	~ 2.36	~ 2.36	~ 2.36	~ 2.36	~ 2.36
<b>Flange</b>							
	G	inch	1.85	3.03	3.62	4.80	4.72
	H	inch	2.95	2.95	5.11	5.51	5.90
	J	inch ± 0.1	2.36	3.46	4.72	6.29	8.26
	K	inch ± 0.1	2.36	2.48	4.52	4.72	5.11
	L	inch ± 0.1	1.57	59.4 x 59.4	2.95		
	M	Ø mm	45H7	45H7	65H7	90H7	100H7
	N	inch	0.43	0.43	0.74	1.25	1.29
	O	inch	0.01	0.01	0.01	0.19	0.19
	AA	Ø inch	5.3	6.3	8.4	10.1	12.0
	BB	Ø mm	M5	M6	M8	M12	M14
<b>Ram</b>							
External ram dimensions	P	inch	Ø 0.55	1.25 x 1.25	1.65 x 1.65	2.16 x 2.16	2.55 x 2.55
Ram bore	Q	Ø mm	6H7	10H7	20H7	20H7	20H7
	R	inch	0.70	1.18	1.96	1.57	1.96
	S		M5	M8	M10	M10	M10
	T	inch	0.31	0.39	0.78	0.78	0.78
Top working position	U	inch	1.57	1.96	2.36	2.36	2.36
Top ram position	V	inch	1.18	1.53	1.29	1.77	1.77
for pin bore	W	inch ± 0.02		0.86	1.25	1.57	1.57
for thread	X	inch		0.86	1.25	1.57	1.57
	Y			M5	M6	M8	M8
	Z	Ø mm		5H7	5H7	8H7	8H7