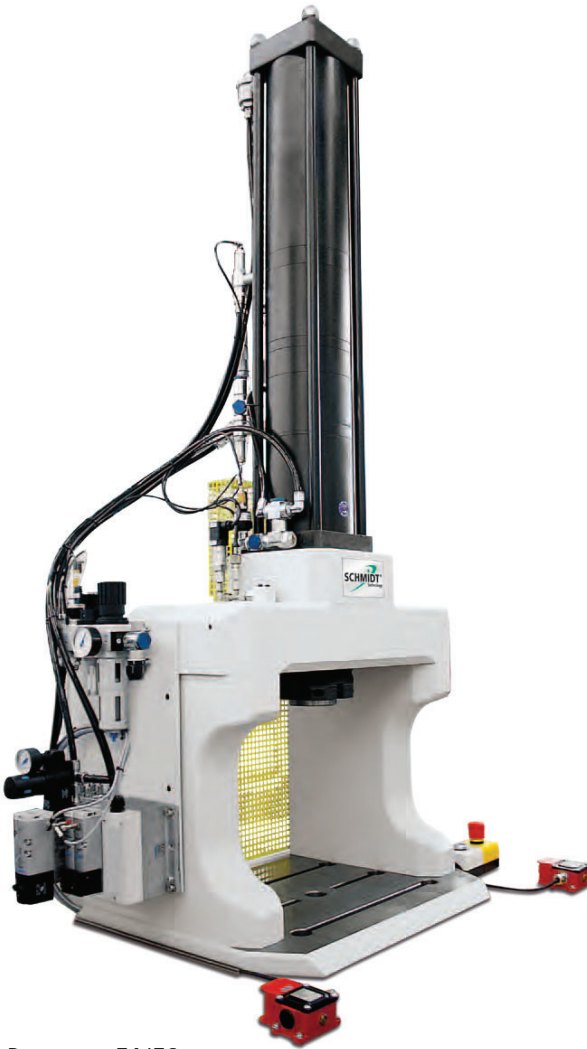


# SCHMIDT® HydroPneumaticPress

## H-Frame design with and without force/stroke monitoring



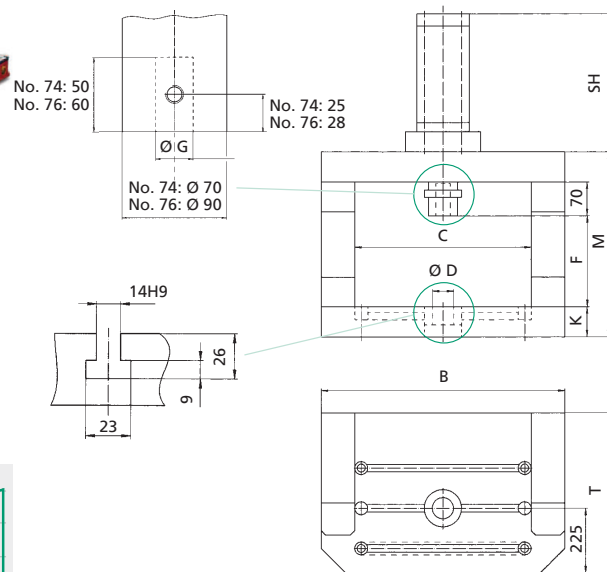
Press type 74/76  
374/376 (with force/stroke monitoring)

### Characteristics

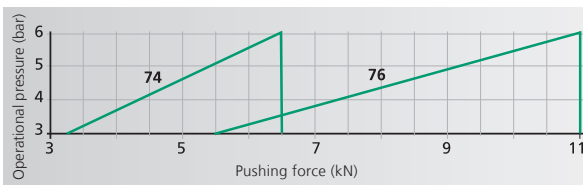
- Stable frame with low bending for the absorption of high forces
- Flexible tool location in the fixture mounting plate due to replaceable centering bushing with precision bore
- The large working area offers sufficient space for large tools
- The force is determined via a pressure transducer with force/stroke monitored presses



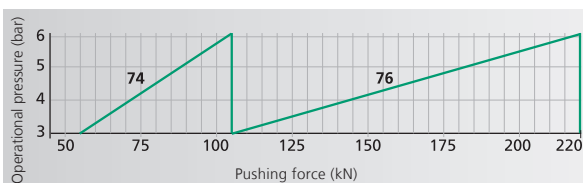
Round ram locked against Rotation with TDC switch (74/76) or position measuring system (374/376) on the rotational guide rod.



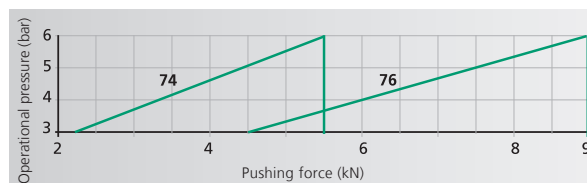
### Rapid approach stroke



### Power stroke



### Return stroke



## From 100 kN to 220 kN in power stroke

Press Type			74	76
Total stroke - Power stroke <sup>1)</sup>		mm	100-12	100-12
Nominal force at 6 bar		kN	100	220
Ram bore	<b>G</b>	∅ mm	25H7	32H7
External ram dimensions		∅ mm	70	90
Working height <sup>2)</sup>	<b>F</b>		350	350
Table height	<b>K</b>	mm	95	95
Frame height	<b>M</b>	mm	640	640
Table size	<b>B x T</b>	mm	640 x 480	640 x 480
Table bore	<b>D</b>	∅ mm	40H7	40H7
Clearance	<b>C</b>	mm	420	420
Clearance o		mm	520	520
Weight (standard)		approx. kg	730	760

Press Type			374	376
Total stroke - Power stroke <sup>1)</sup>		mm	<b>100-12</b>	<b>100-12</b>
Nominal force at 6 bar		kN	100	220
Process data acquisition				
Stroke		µm/inc	5	5
Force		N/inc	32	62.5
Ram bore	<b>G</b>	∅ mm	25H7	32H7
External ram dimensions		∅ mm	70	90
Working height <sup>2)</sup>	<b>F</b>		350	350
Table height	<b>K</b>	mm	95	95
Frame height	<b>M</b>	mm	640	640
Table size	<b>B x T</b>	mm	640 x 480	640 x 480
Table bore	<b>D</b>	∅ mm	40H7	40H7
Clearance	<b>C</b>	mm	420	420
Clearance o		mm	520	520
Weight (standard)		approx. kg	730	760

### Options

o Additional charge applies

<sup>1)</sup> Stroke variants on request

<sup>2)</sup> Typical values; can vary ± 3 mm due to casting and production tolerances

### Accessories



#### High-pressure switch

After switching from rapid approach stroke to power stroke, the oil pressure rises in the hydraulic chamber of the cylinder. The high-pressure switch can be adjusted to reach a determined press force through the output generated by the oil pressure in the press.



#### Adjustment bushing for SCHMIDT® HydroPneumatic-Press No. 74 and 76

For a simplistic adjustment of the working height with a setting range of 100 mm. This greatly reduces the need for spacers to accommodate different working heights during setup changes.



#### Oil pump

For an air-free refilling of the SCHMIDT® HydroPneumatic-Press with hydraulic oil, including 1 liter Hydraulic oil.