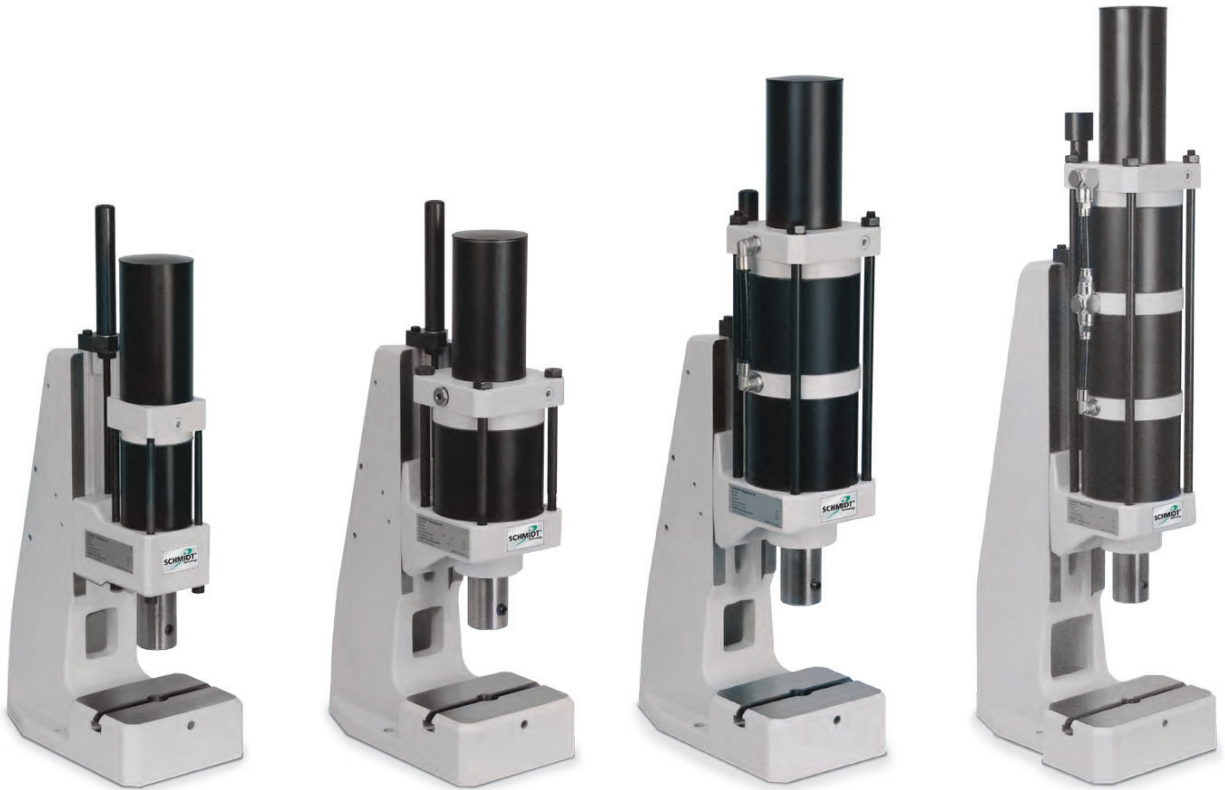


SCHMIDT® PneumaticPress

Direct acting with constant force over the entire stroke

Characteristics

- Round anti-rotational ram
- Adjustable ram position in BDC by means of precision lower stop (1 division line = 0.05 mm) on scale
- T-slot with locking set screw in fixture mounting plate



Press Type 20

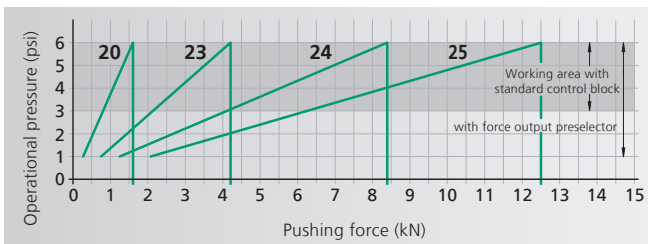
Press Type 23

Press Type 24

Press Type 25



Pneumatic cylinder
with piston and magnet kit
for ram position via cylinder
switch.



From 1.6 kN to 12.5 kN

Press Type			20	23	24	25
Working stroke	A	mm	50, 75	50, 75	50, 75	50, 75
			100, 125	100, 125	100, 125	100
			160, 200	160, 200	160	
			250, 300	250, 300		
Nominal force at 6 bar		kN	1.6	4.2	8.4	12.5
Throat depth	C	mm	86	86	86	86
Throat depth frame o		mm	111, 131 160, 200	111, 131 160, 200	111, 131 160, 200	111, 131
Additional fixture mounting plate suitable for throat depth frame			o	o	o	o
Ram bore	Ø	mm	20H7	20H7	20H7	20H7
Ram diameter	Ø	mm	40	40	40	40
Working height ¹⁾	F					
Frame No. 3		mm	80-220	90-210	90-210	90-210
Frame No. 2 o		mm	110-360	120-350	120-350	120-350
Frame No. 2-600 o		mm	200-600	210-580	210-580	210-580
Frame No. 2-1000 o		mm	330-1040	335-1020	335-1020	335-1020
Weight		approx. kg	30	35	40	45
Flange model			20-FL	23-FL	24-FL	25-FL
Cylinder	Z	Ø mm	69	106	106	106
Flange	FL	Ø mm	110	140	140	140
Width across flats	SW	mm	80	112	112	112
Centering shoulder	ZA	Ø mm	60	68	68	68

Frame Overview	Press Type	Frame Height M (mm)	Table Size B x T (mm)	Table Bore D Ø mm	Table Height K (mm)	Mounting Surface B x L (mm)
No. 3	20, 23, 24, 25	540	150 x 110	20H7	60	150 x 260
No. 2	20, 23, 24, 25	700	185 x 110	20H7	60	185 x 280
No. 2-600 o	20, 23, 24, 25	974	200 x 160	20H7	98	200 x 290
No. 2-1000 o	20, 23, 24, 25	1410	200 x 160	20H7	98	200 x 290

Options

o Additional charge applies

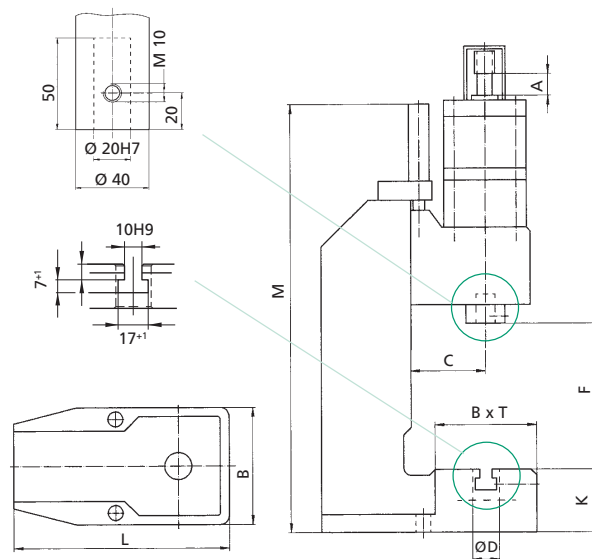
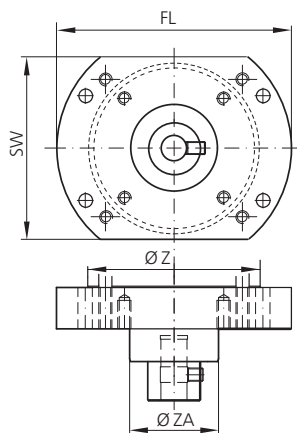
¹⁾ Typical values; can vary ± 3 mm due to casting and production tolerances

Other available options

- Nickel plated – cast parts are electroless nickel plated, steel components black oxide finished, aluminum anodized, precision steel surfaces are untreated
- Custom Paint – press and column can be painted to customer's color specification
- Bores for adapting tooling – customer specific sizes can be supplied

Bottom View of the Press Head, Flange Model

Mounting drill pattern flange/ram



Detailed dimensional drawings can be downloaded: www.schmidttechnology.de

SCHMIDT® PneumaticPress

Direct acting with constant force over the entire stroke

Characteristics

- Round anti-rotational ram
- Adjustable ram position in BDC by means of precision lower stop (1 division line = 0.05 mm) on scale



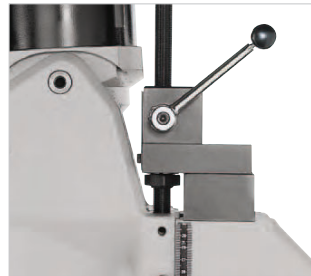
Press Type 27



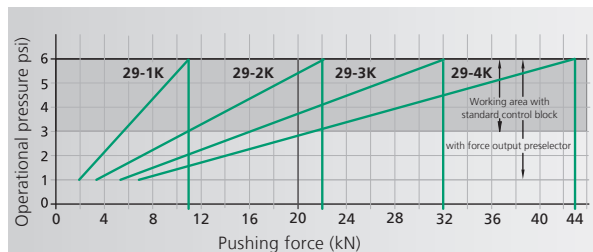
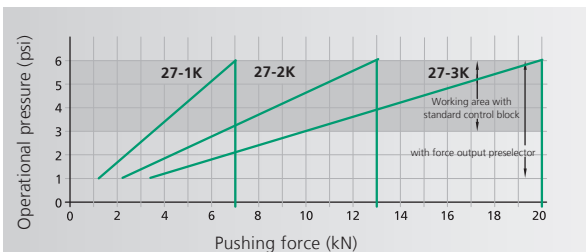
Press Type 29



Precision lower stop



Height adjustment
Fast, accurate setting of the work height.



From 7 kN to 43 kN

Press Type			27-1K	27-2K	27-3K	29-1K	29-2K	29-3K	29-4K
Working stroke	A	mm	50, 75, 100	50, 75	50, 75	50, 75	50, 75	50, 75	50, 75
			160, 200	100, 125	100, 125	100, 160	100, 125	100, 125	100
			250, 300	160, 200	160	200, 300	160, 200	160	
Nominal force at 6 bar		kN	7	13	20	11	22	32	43
Throat depth	C	mm	131	131	131	140	140	140	140
Throat depth frame \circ		mm	151	151	151	160, 185	160, 185	160, 185	160
Additional fixture mounting plate suitable for throat depth frame			\circ	\circ	\circ	\circ	\circ	\circ	\circ
Ram bore	\emptyset	mm	20H7	20H7	20H7	20H7	20H7	20H7	20H7
Ram diameter	\emptyset	mm	40	40	40	50	50	50	50
Working height ¹⁾	F								
Frame No. 34		mm	90-270	90-270	90-270				
Frame No. 301 \circ		mm	160-400	160-400	160-400				
Frame No. 301-500 \circ		mm	310-550	310-550	310-550				
Frame No. 29		mm				80-290	80-290	80-290	80-290
Frame No. 29-500 \circ		mm				150-500	150-500	150-500	150-500
Frame No. 29-600 \circ		mm				250-600	250-600	250-600	250-600
Weight (standard)	approx.	kg	85	85	85	120	120	120	120
Flange model			27-1K-FL	27-2K-FL	27-3K-FL	29-1K-FL	29-2K-FL	29-3K-FL	29-4K-FL
Cylinder	Z	\emptyset mm	132	132	132	170	170	170	170
Flange	FL	\emptyset mm	180	180	180	220	220	220	220
Width across flats	SW	mm	140	140	140	180	180	180	180
Centering shoulder	ZA	\emptyset mm	68	68	68	80	80	80	80

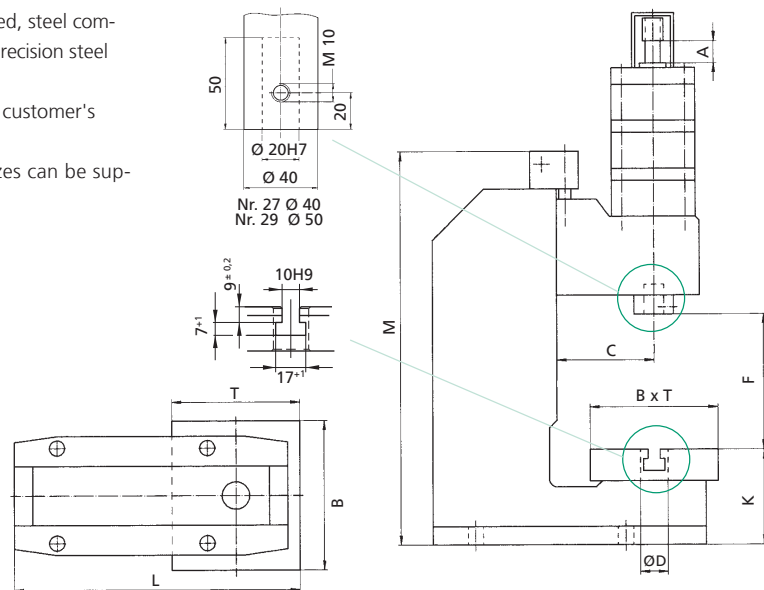
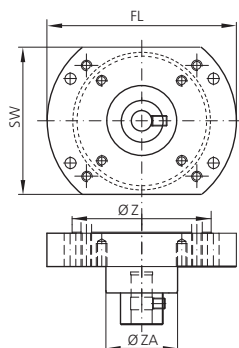
Frame Overview	Press Type	Frame Height M (mm)	Table Size B x T (mm)	Table Bore D \emptyset mm	Table Height K (mm)	Mounting Surface B x L (mm)
No. 34	27	630	200 x 160	25H7	111	200 x 370
No. 301	27	830	250 x 200	40H7	145	250 x 460
Frame No. 301-500 \circ	27	990	250 x 200	40H7	145	250 x 480
Special fixture mounting plate with 3 longitudinal slots \circ			300 x 220 400 x 230	40H7 40H7		
Frame No. 29	29	690	300 x 220	40H7	141	300 x 460
Frame No. 29-500 \circ	29	990	300 x 220	40H7	166	300 x 540
Frame No. 29-600 \circ	29	1110	300 x 220	40H7	166	300 x 565
Special fixture mounting plate with 3 longitudinal slots \circ			355 x 225 400 x 230	40H7 40H7		

¹⁾ Typical values; can vary \pm 3 mm due to casting and production tolerances

Options
 \circ Additional charge applies

Other available options

- Nickel plated – cast parts are electroless nickel plated, steel components black oxide finished, aluminum anodized, precision steel surfaces are untreated
- Custom Paint – press and column can be painted to customer's color specification
- Bores for adapting tooling – customer specific sizes can be supplied



Detailed dimensional drawings can be downloaded: www.schmidttechnology.de